

Scale Rust Effects With: Sophisticated Finishes

The following photos are designed to show the rust finishes you can achieve using TRIANGLE Crafts "Sophisticated Finishes". The photos below show the variation in rust effects that obtained by subsequent applications of the rusting agent.

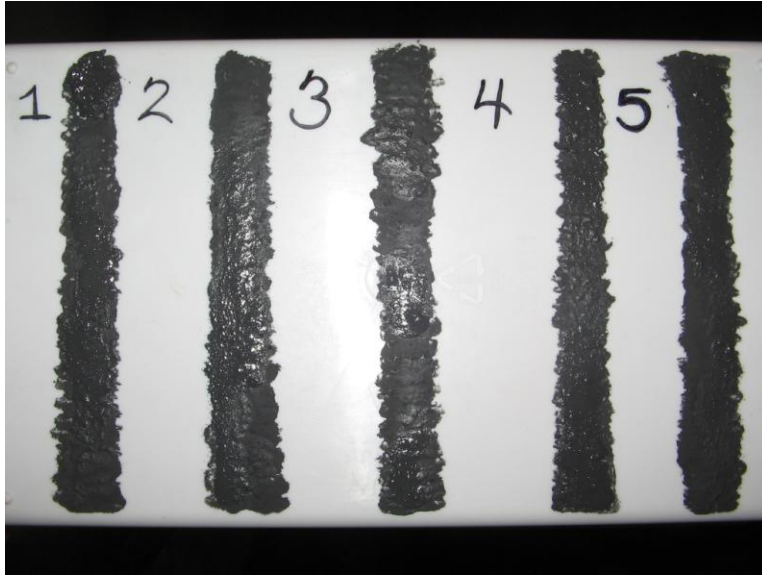


Image 1 shows the application of the "IRON METALLIC SURFACER". This is applied with a standard paint brush. The surface is water soluble but I would recommend using a brush that you do not mind throwing away. This should be left to dry for 12 hours.

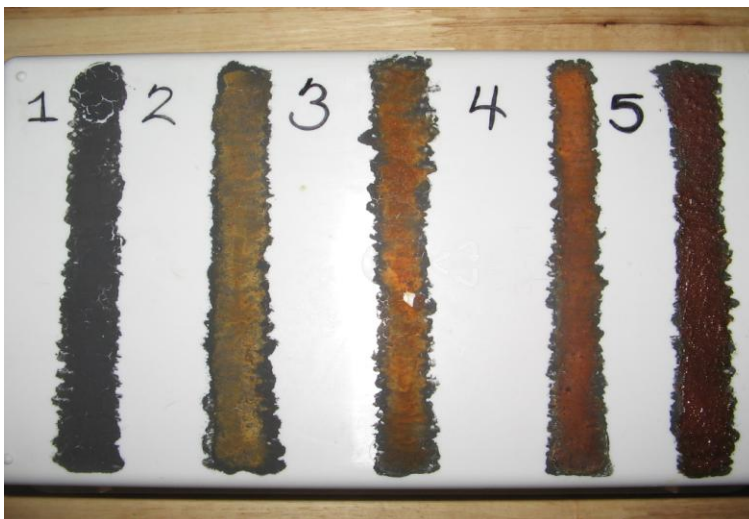


Image 2 shows the application of the "RUST ANTIQUING SOLUTION". Each line shows the number applications of the solution that have been applied to the line. You will notice that the color can be changed dramatically with each application of the rusting solution. Be sure to let each application dry for an hour before the next application. The 5th application also received an application of Testers Gloss Coat to simulate wet rust. SOPHISTICATED

FINISHES can be purchased from craft stores like Michael's or A.C. Moore . As with any new method, I recommend experimenting with this technique before using SOPHISTICATED FINISHES on your favorite project. And, as usual, study your reference photographs to learn where rust occurs naturally on your vehicle.

Iain S. Hamilton